



MV7000 integrated maintenance PC

Ensure availability of your drive's performance data

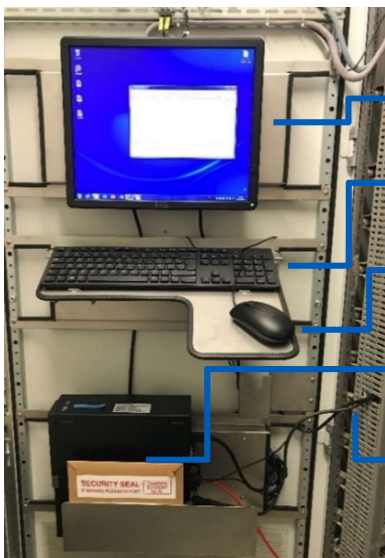
GE Power Conversion constantly develops new product features that benefit our customers to improve reliability and availability of their assets.

We understand that keeping on-hand information of your drive's performance, system alarms and faults is key to maintain the highest availability possible of your assets and reduce downtime when a repair is necessary.

Integrating a PC to your drive

Having a separate laptop increases the risk of losing availability of equipment and information within, mostly caused by external factors like theft, misplacement or even low battery. To avoid these risks, we offer the installation of a Local Integrated desktop computer inside the drive.

Layout of PC IN MV7000

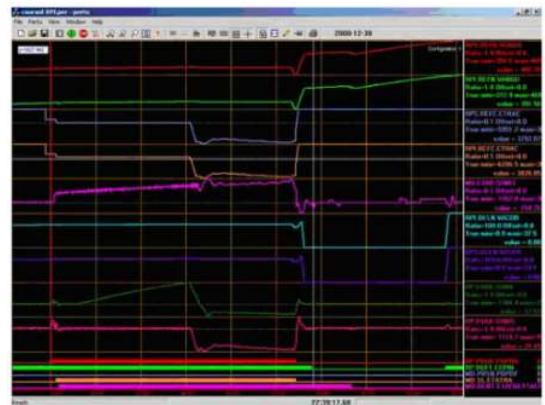


- Monitor
- Keyboard
- Mouse
- CPU
- Cabling

All equipment installation will be placed inside the process cabinet of your MV7 Drive.

Benefits

- Allows real-time troubleshooting due permanent connection to controller
- Minimizes time spent in diagnosing the cause of failure
- Ability to consult historical drive's performance (PERTU tool) and integrated commissioning data (drawings, firmware information, etc.)



Screenshot taken from PERTU tool as reference of waveforms and data collection of VFD

Installation includes

- Compact Desktop PC
- Components:
 - Keyboard
 - Mouse
 - 17" Monitor
 - Cabling
- Installation materials (Brackets , shelves, etc.)

CONTACT US: services.powerconversion@ge.com